

Building the Paper Dice Tower

Tools Needed: A pen, pencil, or bone folder for scoring the paper (this will make folding easier). Paper (heavy card stock preferred). Scissors, a razor knife, and straight edge. Glue stick and tape.

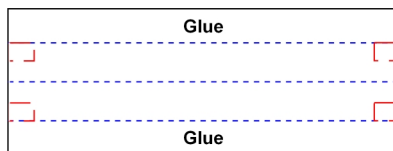
Before you start: You can either use my graphics on the outside or decorate the outside yourself. The fold lines are the blue dashed lines (the shorter dashes) and the cut line are the red dashed lines (the longer dashes). Using a straight edge and a pen (or pencil or bone folder), score all the blue lines first, before cutting.



Step 1) Print the pdf files.

Step 2) The Baffles. Score all the blue lines first. Then cut out the 4 baffles. Fold the baffles so the blue lines are mountain folds (the blue line is on the outside of the folded paper). Do not apply the glue yet. Place them to the side for now.

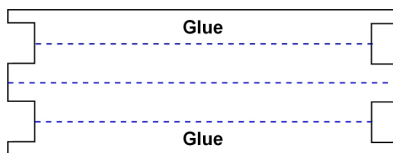
Step 3) The Support Beams. Score all the blue lines first. Cut out the Support Beams so they look like the graphic below.



c Fold the two outer flaps inside and then fold in half so it so it looks like this. While it is folded cut along the red lines to create a notch.



Unfold it, and it should look like this.



Apply glue to the 2 flaps and and fold them over so that the blue lines are inside. Fold in half again so that the wood grain is on the outside and it should look like this when done.



Do not add glue so that it stays flat...let it v out from the middle fold. Place the 2 Support Beams aside for now.

Step 4) The Court Yard. Score all the blue lines first. Cut out the Court Yard. Before cutting out the Support Beam slit, fold that flap so it look like this and use your razor knife to cut. This makes it easier.



Place the Court Yard off to the side for now.

Step 5) The Tower. Score all the blue lines first. Cut the door out. Cut out the 4 slits for the Support Beams (if you fold it over like you did for the Court Yard it will be easier). Fold all 4 of the fold lines in a valley fold, then fold the fold the middle fold line (M fold) into a mountain fold and place the tower on the table. The folds should make it look like a W.

Step 6) Glue the Baffles to the Tower. The baffles should be folded and ready to go with the fold lines on top of the mountain folds. Place the Tower so it is laying on the table with the door near the bottom (closer to you). Take a second to place a baffle on the tower without glue...notice how tab fit into the baffle lines. Start with the left (or the right side) and do those baffle before continuing to the other side. Do one baffle at a time.

Apply glue to the tabs on the baffle that say glue. I also apply tape to the other side of the tabs (this holds everything together while the glue dries). It can be a little tricky gluing the baffles to the tower, since the tower doesn't always co-operate, but persistence will win.

Step 7) Gluing the Tower's seam. Once all 4 baffles have been glued, fold the tower along the B folds so that it is flat on the table. On the flap that says "Tower Seam Glue" is where you will apply the glue. *Note: there is a small gap between where the two flaps connect and some glue might attach to the other side of the tower. Be mindful not to let this happen if you can.*

After gluing the seams press the tower flat with a little pressure and then let it sit for a few minutes while the glue sets.

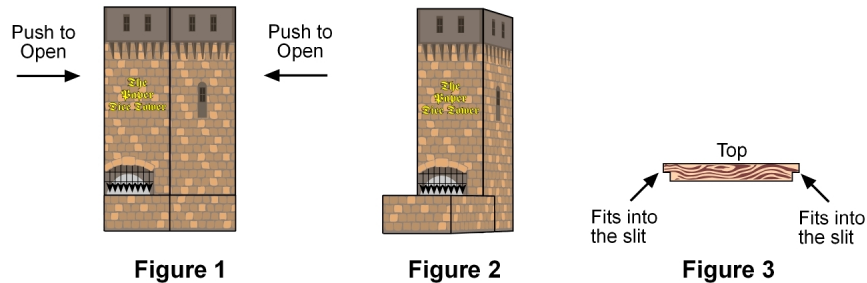
Step 8) Attaching the Court Yard. Place the tower flat on the table with the door to the bottom left. Note the fold in the tower where the beam slit is. Add glue the tab on the courtyard near the beam slit and place it so the fold on the courtyard and the fold on the tower align. The courtyard should also align with the bottom of the tower.

Apply glue to the other tab on the courtyard and glue it to the wall to the left of the door, so that the fold in the courtyard lines up with the edge of the door.

Step 9) Completed. Your Paper Dice Tower is now complete. Give some time for the glue to set and then you can try it out.

Using the Paper Tower

Pop open the paper tower by pushing on the two corners (figure 1) about midway up the tower so it looks like (figure 2). Swing out the court yard wall so it is in front of the tower.



Install the two support beams inside the tower. One goes in thru the top and the other in thru the bottom. To install press on the two opposite corners without the slits in them, so that the tower will open wide enough to fit them in, once the beams are in the slit holes, release and the tower will squeeze down on the support beams holding them in place.

How to Use: Hold the tower with one hand and drop the dice into the top of the tower with your other hand. The tower can handle up to 10 (or so) dice at a time. Once the dice have traveled through the tower; pick the tower straight up so all the dice can be seen. If you are rolling a

really large quantity of dice do it in a smaller groups of 10 (or so).

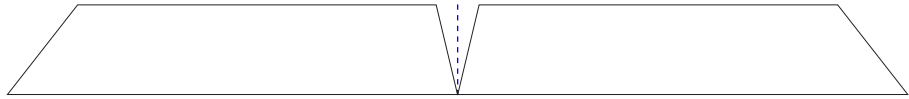
When you are holding, picking up or passing the tower to another player you should do so by holding and applying the pressure to the two opposite flat sides (not corners). You can accidentally release the support beams by putting pressure on the corners.

When folded flat the Paper Dice Tower fits nicely into a 6x9 envelope for easy storage.

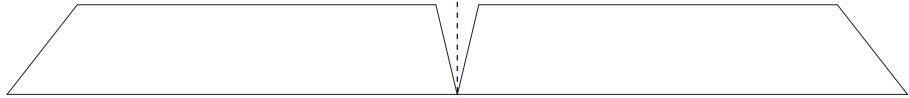
The Paper Dice Tower is licensed under the
Creative Commons Attribution-Share Alike 3.0 License
www.creativecommons.org
© 2012 tjgames.com
Enjoy

Beam →

Beam →



BAFFLE

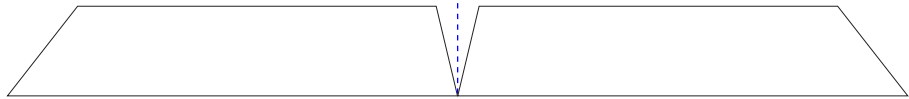


BAFFLE

B
Fold

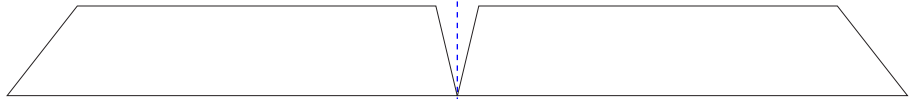
M
Fold

B
Fold



BAFFLE

Tower Seam Glue



BAFFLE

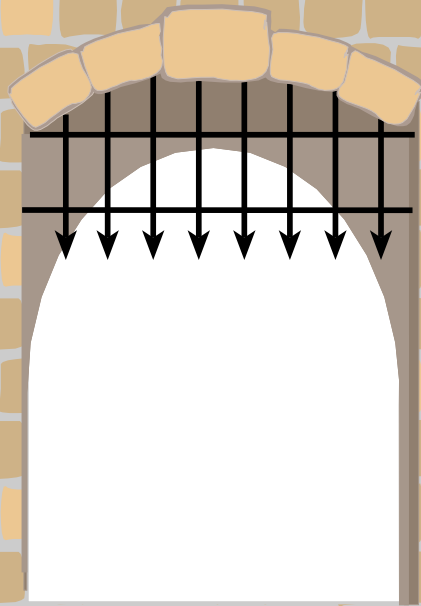
Beam →

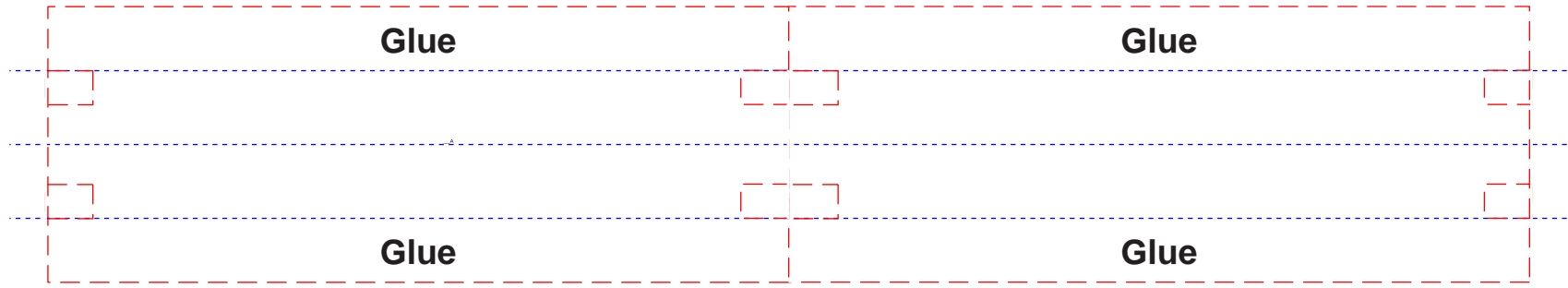


DOOR



Beam →

The Paper Dice Tower



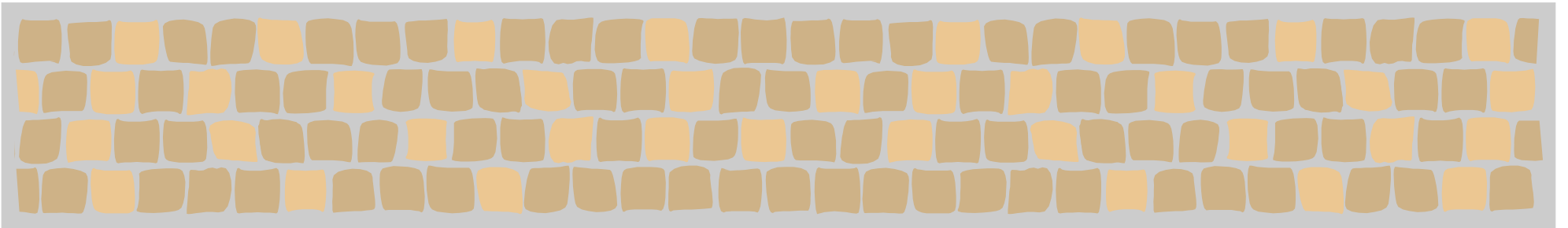
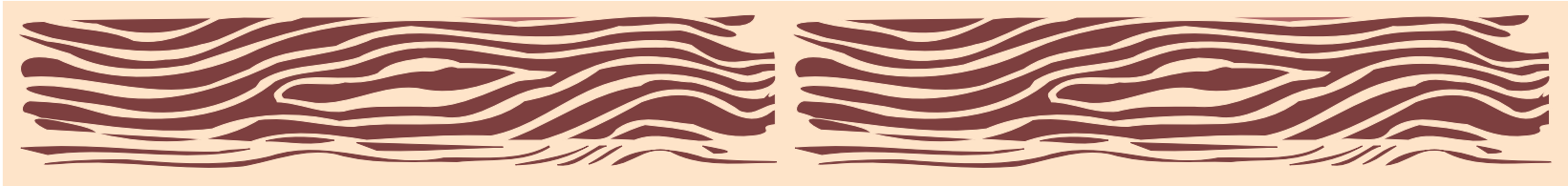


Support Beams

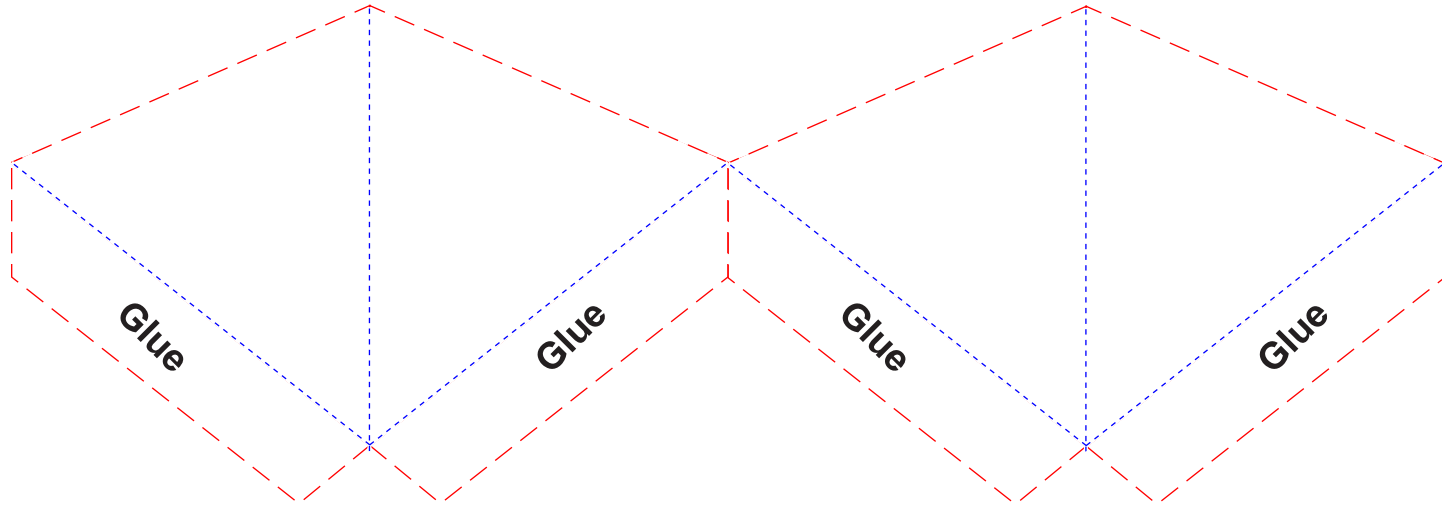
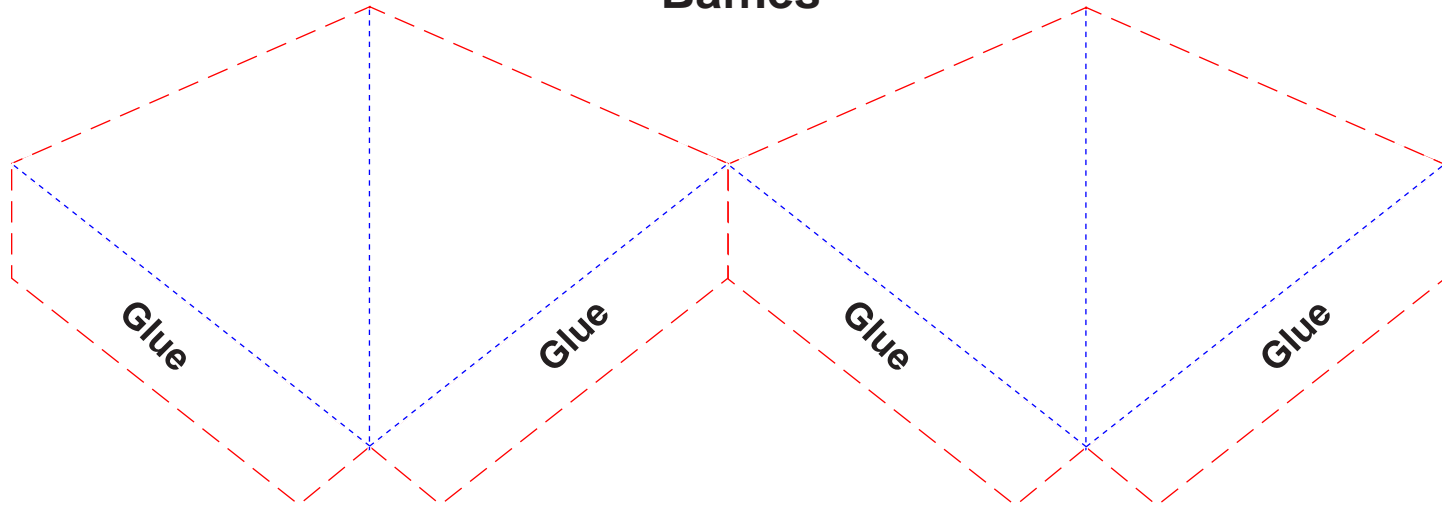
Fold Line 
Cut Line 




Court Yard



Baffles



Fold Line 
Cut Line 